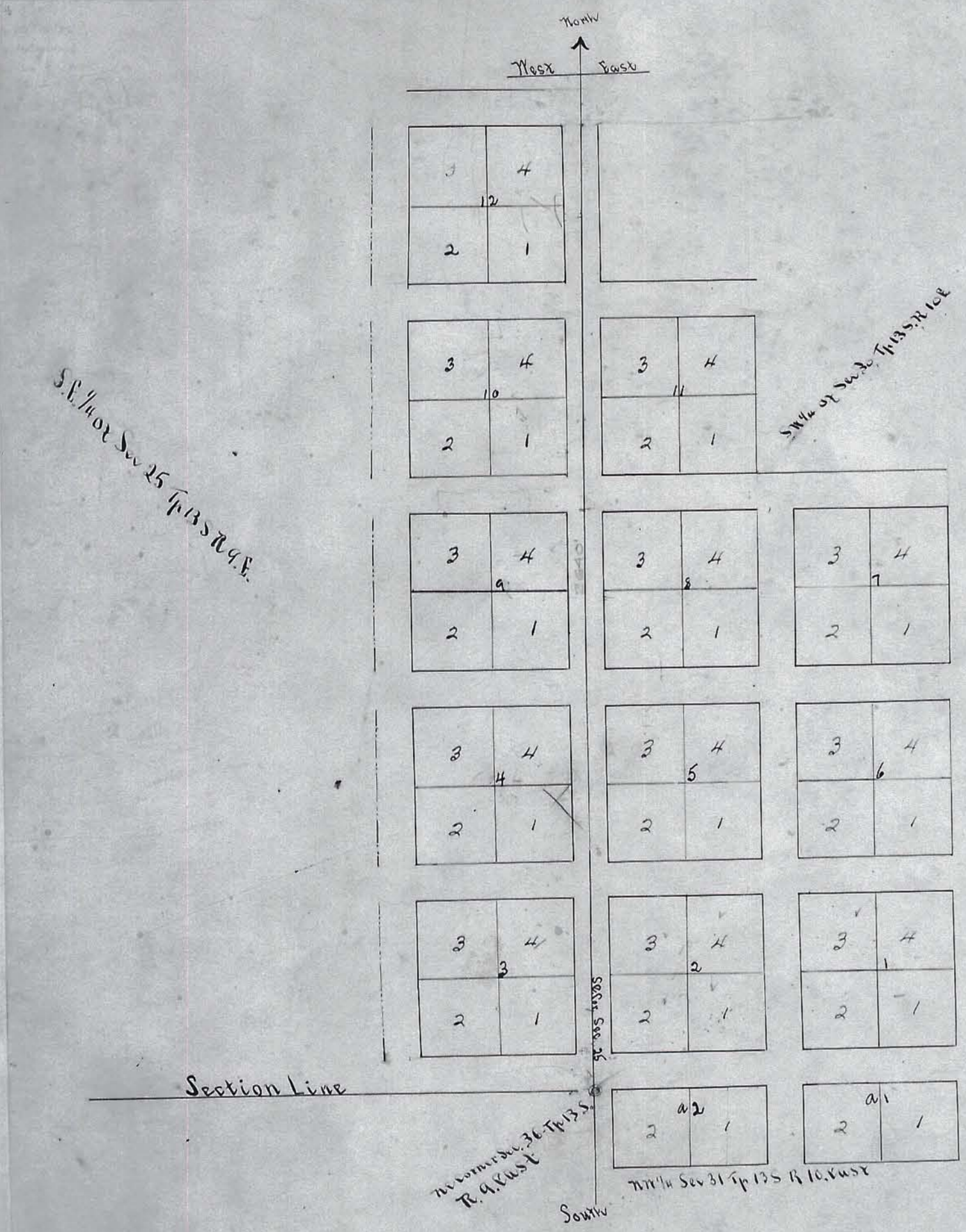


### Spring Glen Townsite.



Scale 200feet to 1 inch

All blocks are 2640 sq. ft. except block 12, which are 26 east and west by 13 north and south. All streets are 6 rods wide.

Plat of the Spring Glen townsite as surveyed by me on May 7<sup>th</sup> and 25<sup>th</sup> 1890 situated partly in the S.E. 1/4 of Sec 25 T. 13 S. R. 4 E. partly in the S.W. 1/4 of Sec 26 and partly in Sec 31 T. 13 S. R. 4 E. 51 acres and 132 sq. rods in this townsite.

Wm. H. Cox  
County Surveyor Emery County

Approved 5<sup>th</sup> day of Oct 1891  
Jasper Robertson - Judge  
Attest: Carl Killberg - Probate Clerk  
Recorded Oct 5<sup>th</sup> 1891 - Carl Killberg - Recorder.